

REVISIONS	BY
12/10/91 ISSUED FOR REVIEW	
3/18/92 ISSUED FOR BIDS	
Addendum #1 Page I, II, III	M.J.
B. MOVE PIPE 8/21/92	CEB
AS-BUILT 12/06/93	NLF

**Binkley Associates**  
CONSULTING ENGINEERS  
7246 SHARON DRIVE • SAN JOSE • CALIFORNIA 95129

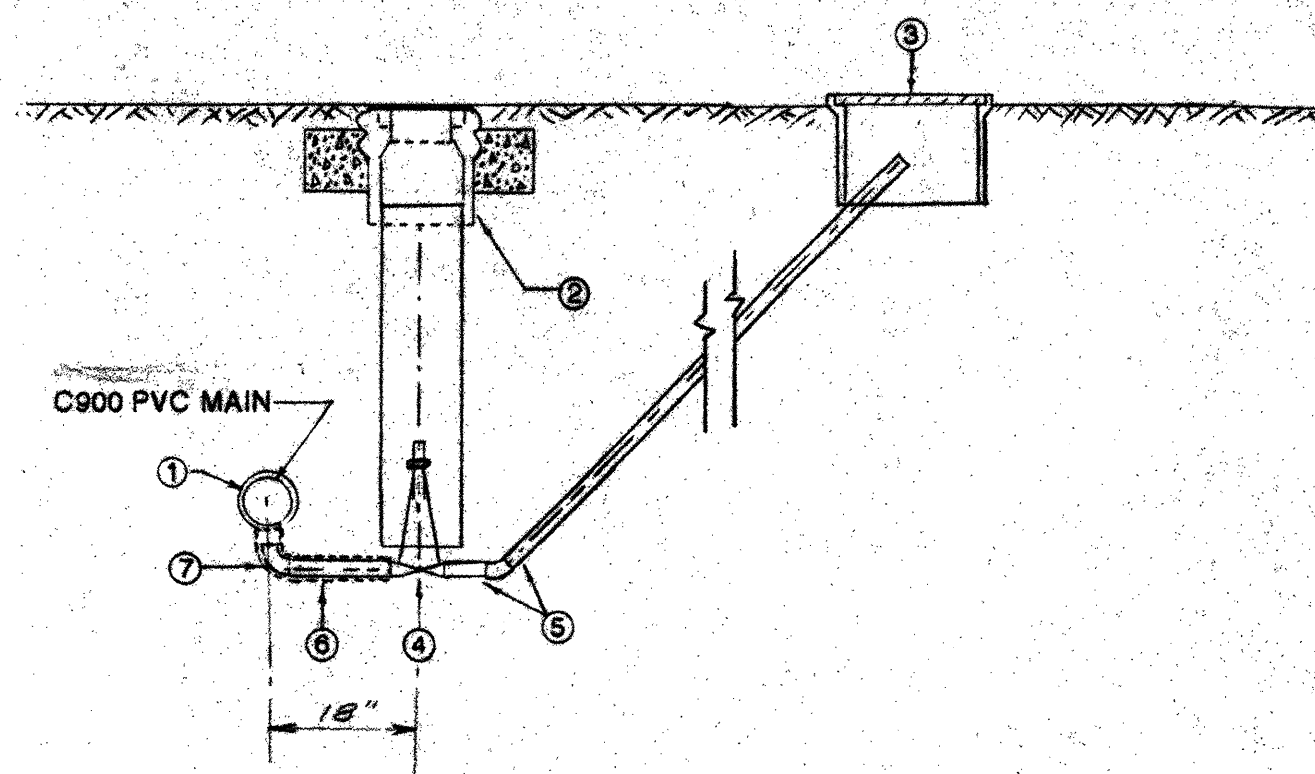
WATER DISTRIBUTION  
PLAN PROFILE  
LINE A TANK TO STA. 12+58  
PHASE I

BRUSH & OLD WELL MUTUAL WATER CO.  
REMEDIAL WATER SYSTEM

DATE:	11/05/91
SCALE:	AS SHOWN
DRAWN:	R.C.
JOB:	22002
SHEET:	2
OF	12 SHEETS

# AS-BUILT NOTES:

1. COMPILED BY BINKLEY ASSOCIATES FROM WATER LINE EASEMENT SURVEY OF THE CROSS-COUNTRY PORTION OF THE PROJECT BY WESTFALL ENGINEERS, INC. AND MEASUREMENTS OF VISIBLE FACILITIES ON THE ROAD PORTION BY BINKLEY ASSOCIATES.
2. AS-BUILT STATIONING OF THE WATER LINE CENTER LINE REPRESENTS SLOPE DISTANCES ON THE ROAD PORTION, AND HORIZONTAL DISTANCES ON THE CROSS-COUNTRY PORTION.
3. WATER LINE ROUGHLY FOLLOWS THE CENTER LINE OF THE WATER LINE EASEMENT.
4. A TRACER WIRE IS INSTALLED WITH ALL NON-METALLIC PIPE FOR PRECISE LOCATION IN THE FIELD.

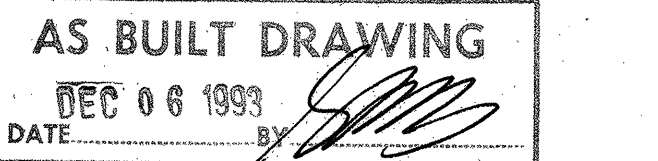
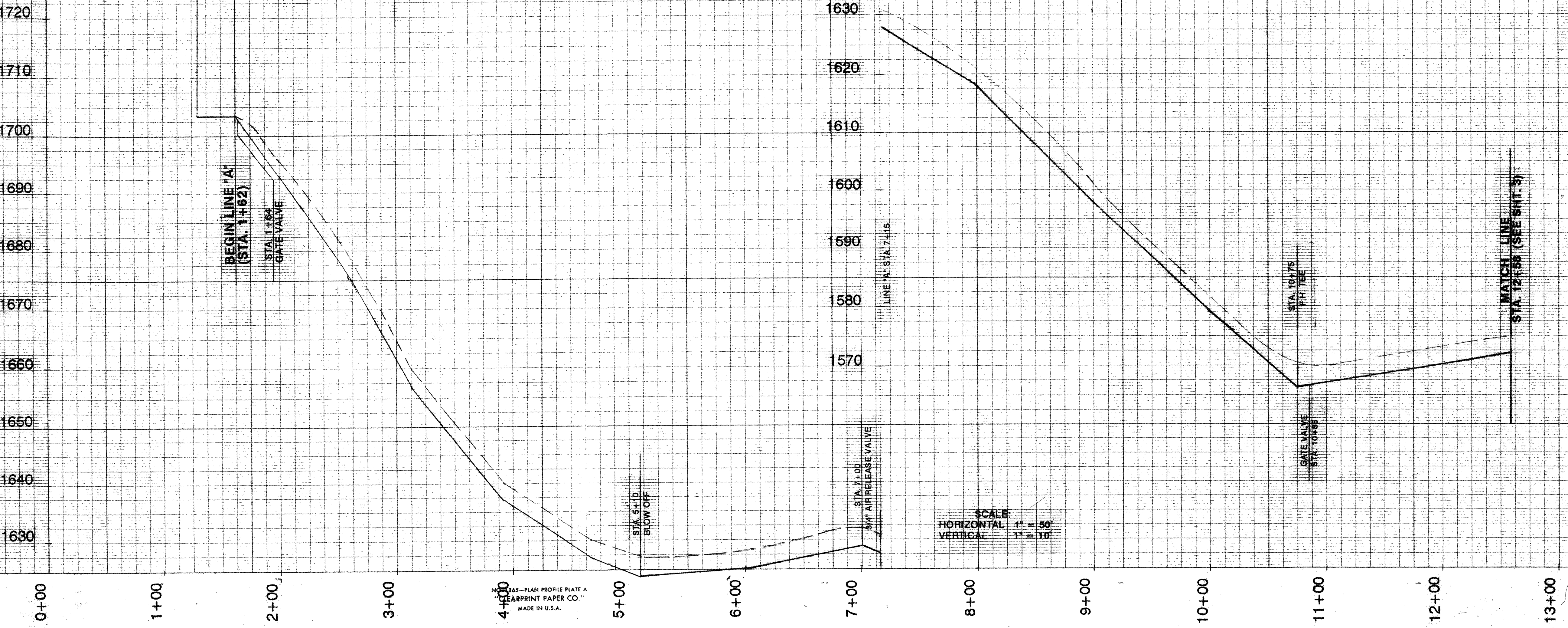
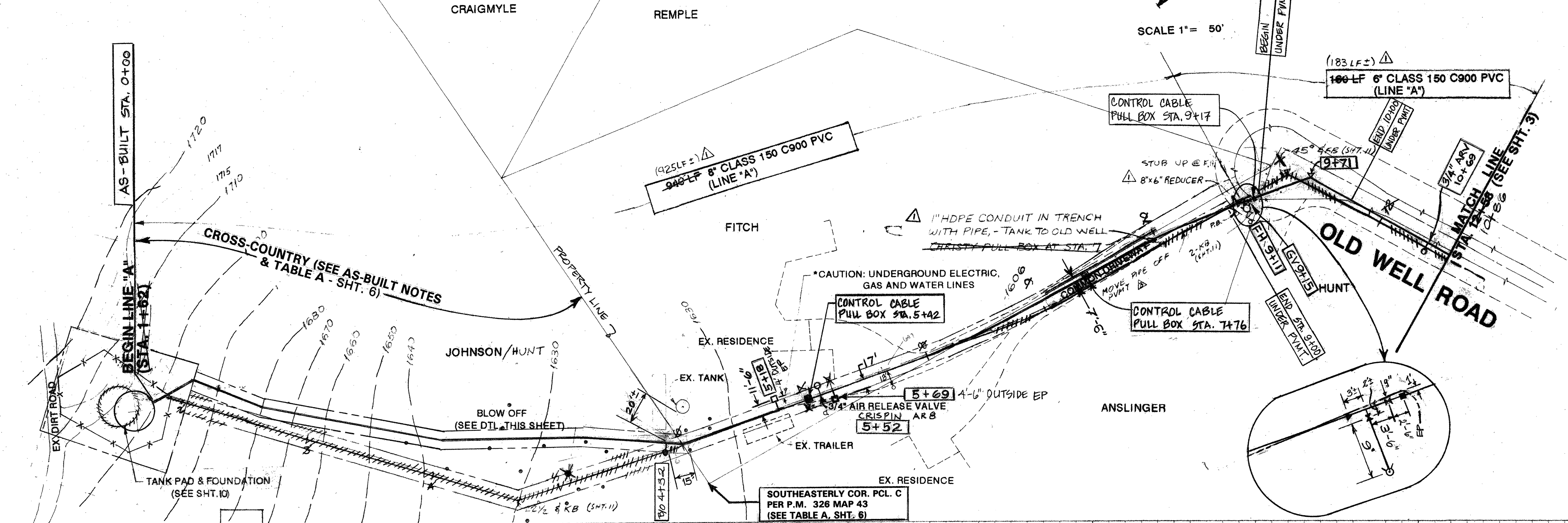


## MATERIALS:

1. FORD FC202 SADDLE W/2" NPT OUTLET, WRAP OUTLET WITH 10MIL PIPE TAPE.
2. VALVE BOX PER GATE VALVE DETAIL.
3. CHRISTY B9 METER BOX PER SERVICE DETAIL.
4. 2" ANWA IRON BODY GATE VALVE WITH 2" SQUARE OPERATING NUT.
5. 2" SCH. 40 PVC PIPE.
6. 2" GALVANIZED STEEL PIPE, WRAP WITH 10MIL PIPE TAPE.
7. 2" GALVANIZED STREET ELBOW, WRAP WITH 10MIL PIPE TAPE.

## BLOW-OFF VALVE (N.T.S.)

- LEGEND
- FIRE HYDRANT (FH)
  - GATE VALVE (GV)
  - BLOW OFF (BO)
  - SUPPLY SYSTEM PIPE & SIZE
  - DISTRIBUTION SYSTEM PIPE & SIZE
  - PRESSURE REDUCING VALVE
  - DISTRIBUTION SYSTEM STORAGE TANK
  - AIR VALVE (AV)
  - WATER SERVICE (WS)
  - STAGING AREA (AS STAKED IN FIELD)
  - EXISTING UTILITY POLE
  - EXISTING TREE
  - EXISTING CMP CULVERT (NOTE: SOME NEW CULVERTS NOT SHOWN) (SEE DETAIL SHEET 12)
  - PULL BOX
  - EDGE OF PAVEMENT



AS BUILT DRAWING  
DEC 06 1993  
DATE

GRB