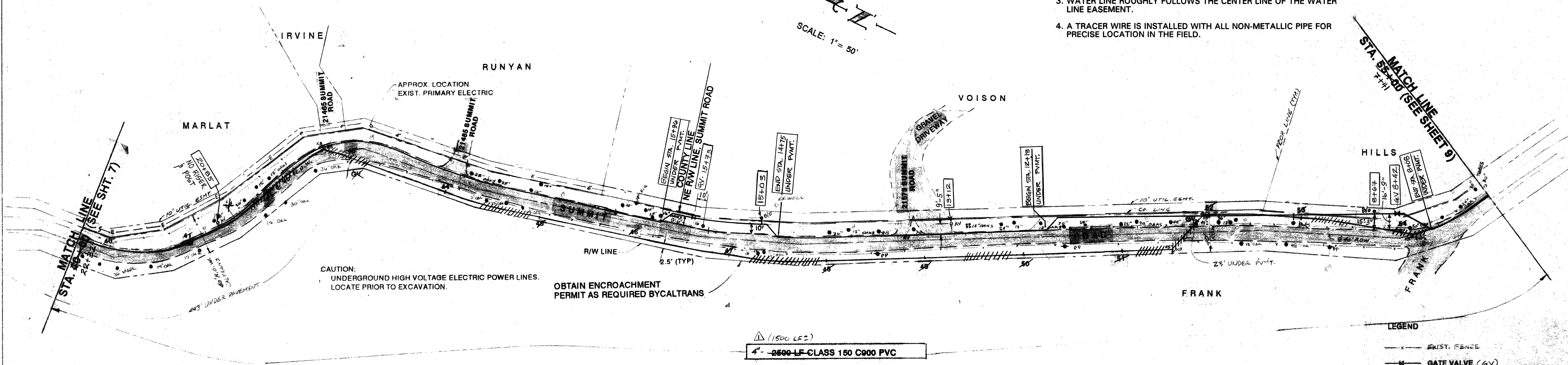


SANTA CLARA COUNTY

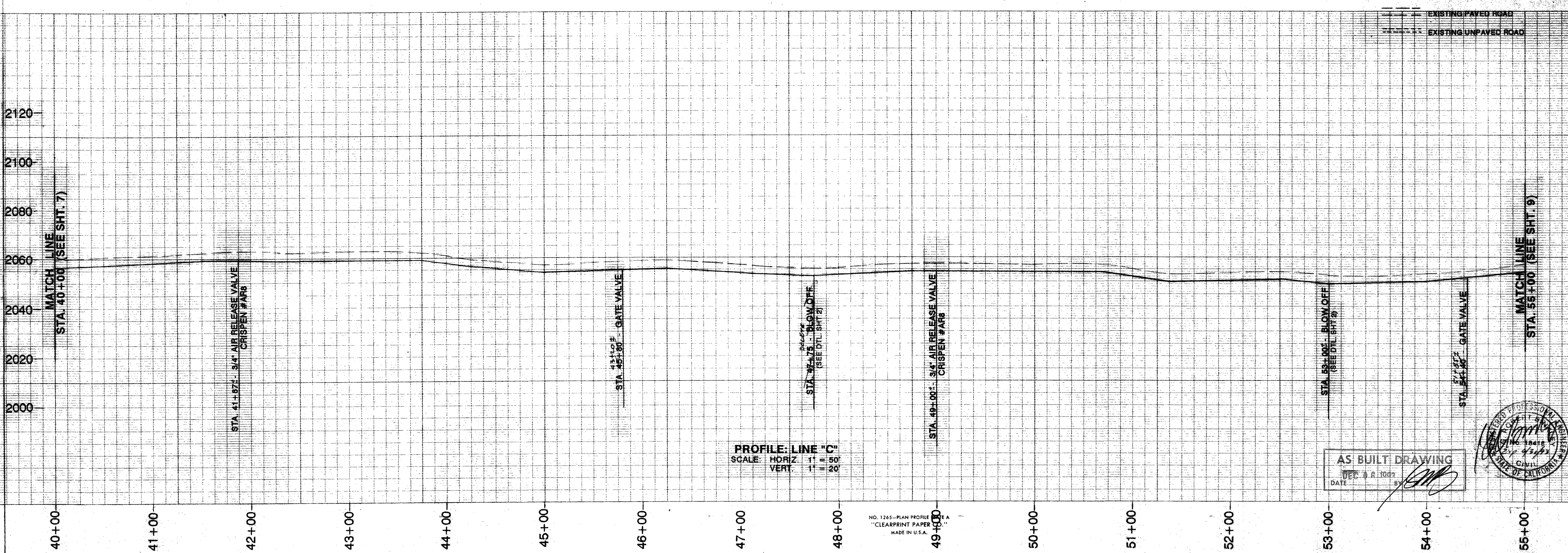
AS-BUILT NOTES:

1. COMPILED BY BINKLEY ASSOCIATES FROM WATER LINE EASEMENT SURVEY OF THE CROSS-COUNTRY PORTION OF THE PROJECT BY WESTFALL ENGINEERS, INC. AND MEASUREMENTS OF VISIBLE FACILITIES ON THE ROAD PORTION BY BINKLEY ASSOCIATES.
2. AS-BUILT STATIONING OF THE WATER LINE CENTER LINE REPRESENTS SLOPE DISTANCES ON THE ROAD PORTION, AND HORIZONTAL DISTANCES ON THE CROSS-COUNTRY PORTION.
3. WATER LINE ROUGHLY FOLLOWS THE CENTER LINE OF THE WATER LINE EASEMENT.
4. A TRACER WIRE IS INSTALLED WITH ALL NON-METALLIC PIPE FOR PRECISE LOCATION IN THE FIELD.

SCALE: 1" = 50'



SANTA CRUZ COUNTY



3/18/92  
ISSUED FOR BIDS  
MIDNUM #1  
PHASE I+II  
(PIPE LENGTH)  
CLARIFY CO.  
ADD ADDRESS  
EX. FEATURES  
REALIGN MAIN  
C.O. ST. 9  
1/12/93  
AS-BUILT  
12/06/93

**Binkley Associates**  
CONSULTING ENGINEERS  
7146 SHARON DRIVE • SAN JOSE • CALIFORNIA 95129

WATER SUPPLY TRANSMISSION  
PLAN PROFILE  
PIPELINE 'C' STA 40+00 TO STA 55+00  
PHASE II

BRUSH & OLD WELL MUTUAL WATER CO.  
REMEDIAL WATER SYSTEM

DATE: 3/18/92  
SCALE: AS SHOWN  
DRAWN: M.J. & W.R.  
JOB #: 22003  
SHEET: 8  
OF 12 SHEETS